

Junior Scientists

Book 1

Ages 6-7 years

Earth & Space Sciences

Physical Sciences

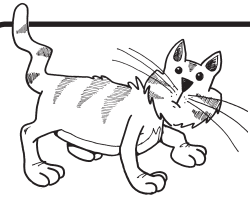
Biological Sciences

Chemical Sciences



By Yolanda Cool

Animal Parts



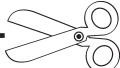
**All animals have body parts.
Different animals can have the same body parts.**



Draw your pet or animal.

- Use some of your own words as well as the words below to label its body parts.

head	eyes	nose
body	legs	mouth



My friend has drawn a picture of:

My animal and my friend's animal both have:

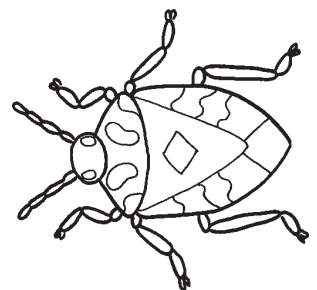
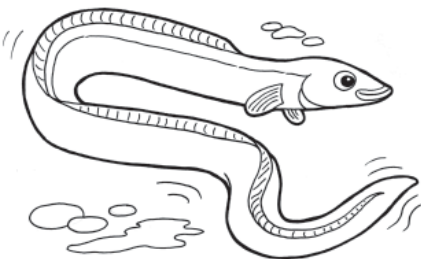
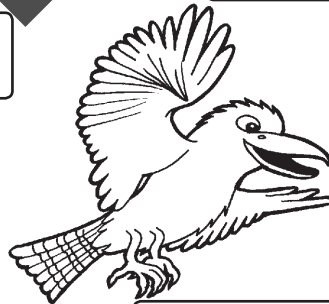
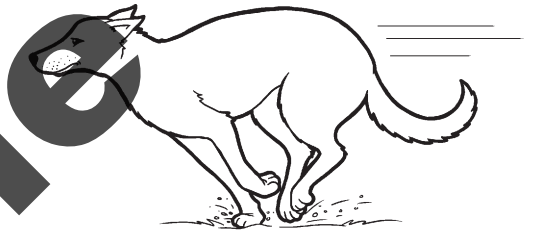
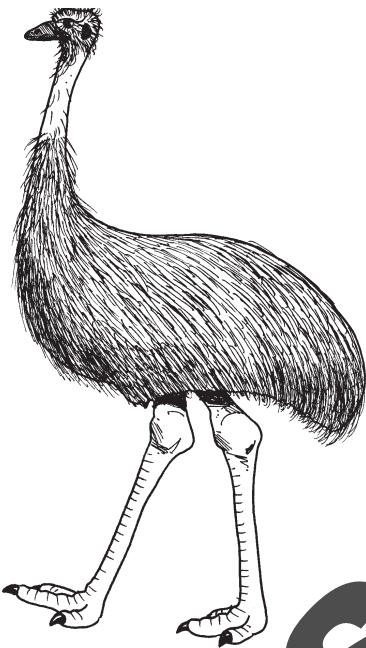
▶ How Animals Move



Animals move in different ways using different body parts.

○ Match the words with the pictures to show how the animals move.

climbing **crawling** **flying** **hopping**
running **swimming** **walking**



○ Colour the body part of each animal that helps it to move.

▶ Plant Parts



Draw the other half of the plant and label it.

stem
seed

roots
flowers

buds
petals

leaves
soil



○ Fill out the missing information.

I am a **seed**.

I need

and

to grow.

I am **soil**.

I provide the plant
with

to grow and

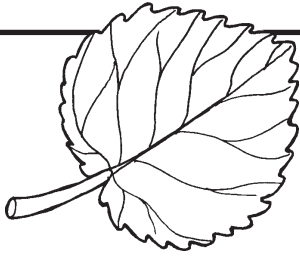
.

I am the **roots**
of a plant.

I transport

and .

▶ The Purpose of Plant Parts



The process of the leaves absorbing sunlight to make food for the plant is known as photosynthesis.

The recipe for photosynthesis – Match the words to show the recipe for photosynthesis.



Light energy

found in the cells of green plants

Carbon dioxide

from the sun

Water and Nutrients

from the air

Chlorophyll

collected by the roots

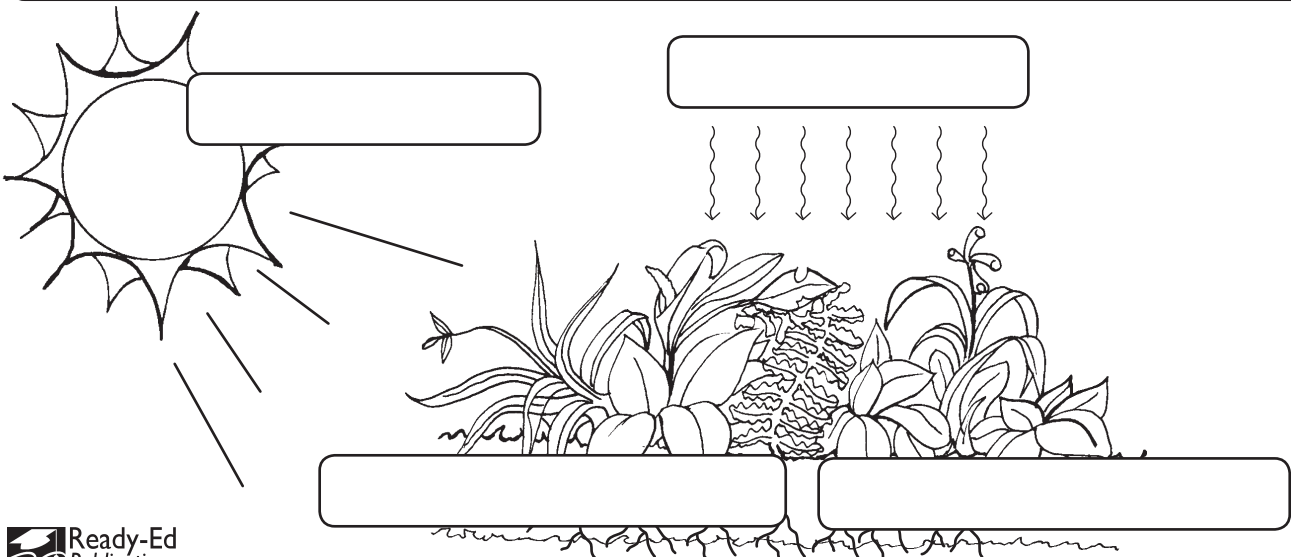
○ Using the following words to label the diagram below.

Light energy

Carbon dioxide

Water and Nutrients

Chlorophyll



▶ Animal and Plant Word Search

○ Find the animal and plant words in the word search. ↑ ↗ ↔

P	B	T	L	F	F	T	N	F	W	U	S	S	R	P
O	H	A	A	L	F	T	S	F	O	F	H	T	Y	L
G	S	O	O	E	N	L	O	J	R	O	W	O	B	I
Z	O	W	T	A	B	Z	T	U	D	U	D	O	S	O
N	E	E	L	O	L	A	M	I	N	A	I	R	T	S
R	D	P	D	W	S	W	A	T	E	R	E	T	E	W
W	P	Y	R	J	L	Y	S	M	O	V	E	H	M	Y
I	Y	Z	D	M	J	H	N	L	J	L	O	M	R	X
N	A	E	T	X	N	U	B	T	A	N	U	S	Q	O
D	E	Z	P	W	P	B	D	Q	H	T	L	F	M	L
S	J	F	G	L	U	J	C	I	L	E	E	Y	O	E
F	E	C	L	D	W	R	I	R	P	D	S	P	Z	A
T	M	O	W	Y	V	Y	U	F	F	O	V	I	X	V
R	L	L	I	Z	M	B	T	F	F	S	O	X	S	E
S	G	E	L	H	F	U	Y	C	K	S	A	L	N	S

leaves

head

animal

stem

sun

food

flower

soil

water

roots

seed

photosynthesis

bud

move

wind

body

eat

fruit

legs

plant

petals

