

RENZ4001

Our Earth

Earth Science themes for
9 – 12 year olds.



Written by Judy Gabrovec. Illustrated by Melinda Parker. Typesetting and Design by Shay Howard.

Published by Ready-Ed Publications (2006)

© Ready-Ed Publications - 2006. P.O. Box 276 Greenwood Perth W.A. 6024

Email: info@readyed.com.au Website: www.readyed.com.au

COPYRIGHT NOTICE

Permission is granted for the purchaser to photocopy sufficient copies for non-commercial educational purposes. However, this permission is not transferable and applies only to the purchasing individual or institution.

ISBN 1 86397 352 4

Contents

Teacher's Information	2
■ Teachers' Notes: The Structure of the Earth	4
The Earth's Structure	5
The Earth's Crust	6
Tectonic Plates	7
How Tectonic Plates Move	8
Pangaea	9
Pangaea, The Earth's Jigsaw Puzzle	10
The Ring of Fire	11
■ Teachers' Notes: Landforms	12
Landforms	13
Plateaus and Plains	14
Mountain Ranges	15
Fold Mountains	16
Block Mountains	17
Dome Mountains	18
Volcanic Mountains	19
Geysers and Hot Springs	20
Volcanic Activity	21
■ Teachers' Notes: Rivers and Inland Water	22
River Formation	23
River Valleys	24
Waterfalls, Rapids and Plunge Pools	25
Loops and Lakes	26
Deltas	27
Create a Model of a River Landscape	28
■ Teachers' Notes: Coastal Landscapes	29
Coastal Landscapes	30
The Work of the Sea	31
Headlands	32
Sea Cliffs and Caves	33
Sea Caves	33
Blowholes	34
Natural Bridges and Stacks	35
Beaches	36
Sandbars and Lagoons	37
How a Sand Dune Forms	38
Sand Dunes	39
Create a Coastal Landscape	40
■ Teachers' Notes: The Ocean	41
The Ocean	42
Seas and Oceans	43
Sea Waves	44
Tsunamis - the Wave Train	45
Tides	46
Coral	47
Coral Reef	48
Oceanic Volcanoes	49
Coral Atoll Islands	50
Volcanic Island	51
■ Revision Exercise: Which Landform?	52

The Earth's Structure

Use a dictionary to find out what these key words mean:

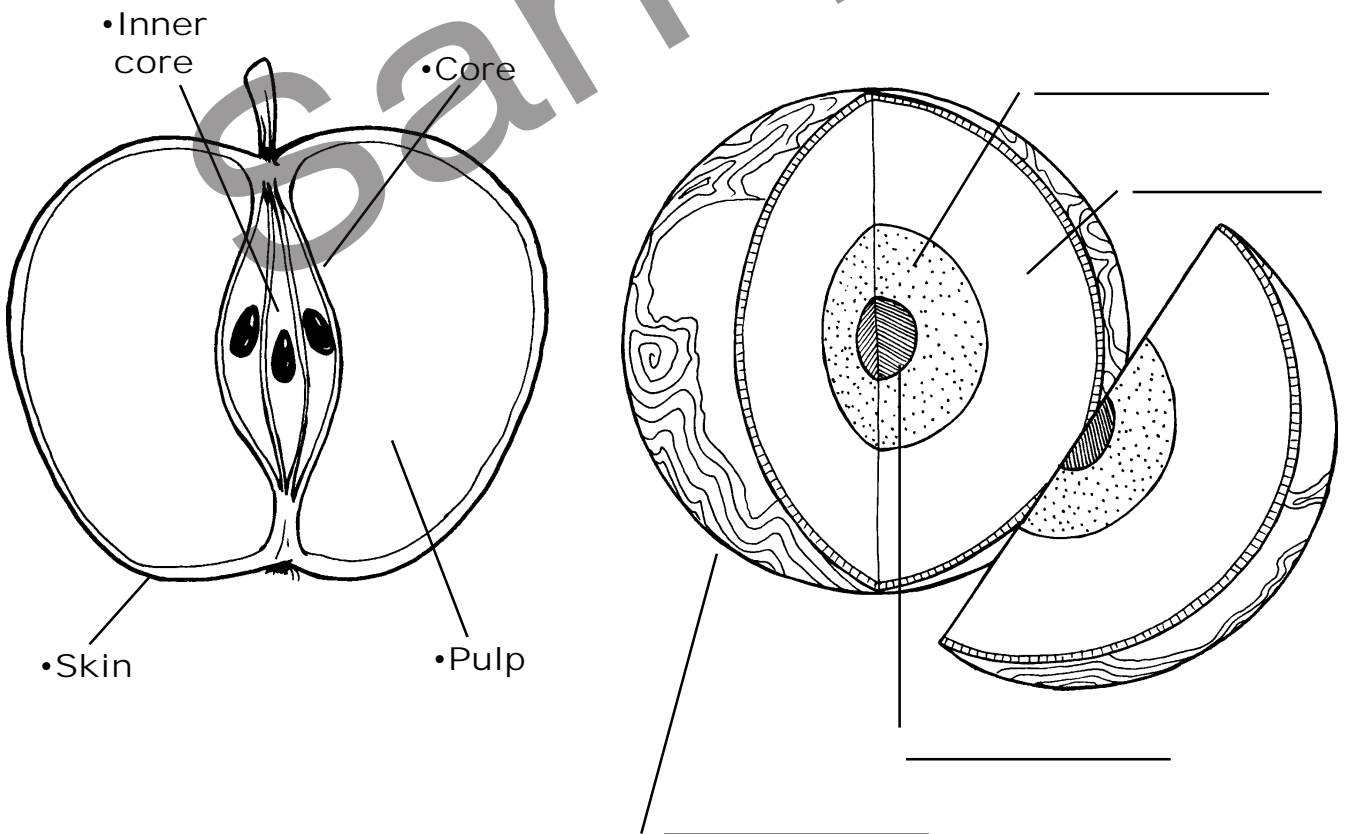
- landforms _____
- metallic _____
- core _____
- mantle _____

Cut an apple in half and look at the inside structure. There are four layers of an apple - the skin, the pulp, the core and the apple's centre or inner core.

The earth, like the apple, is made up of four layers.

1. The crust which is the thinnest and contains all the earth's landforms.
2. The mantle which is thicker and lies beneath the crust.
3. The earth's metallic core.
4. The inner core.

Using this information, label the diagram of the earth's structure.



Explore Further!

Visit this web site to learn more about the earth's structure:
 ▶ volcano.und.nodak.edu/vwdocs/vwlessons/lessons/Earths_layers/Earths_layers2.html

Ring of Fire

Most volcanoes are located on the ridges and boundaries of the earth's tectonic plates (see page 7). Look at the map below that shows the location of the volcanoes that form "The Ring of Fire".

Use an atlas to locate the oceans and the continents on the map.



Why do you think the volcanoes in this area are called "The Ring of Fire"?

Find out what country these volcanoes are in and when they last erupted. Place them on the map.

VOLCANO	COUNTRY / ISLAND	LAST ERUPTED
Antofalla	_____	_____
Cotopaxi	_____	_____
Sangay	_____	_____
Mauna Loa	_____	_____

Question Time!

Find out why people still continue to live near volcanoes even though they are so destructive when they erupt.

Mountain Ranges

Mountains are portions of the continental crust that rise above the land surface to a height of at least 600 metres. Mountains usually occur in a group, or as a mountain range or chain. They usually occur at the boundaries of the world's tectonic plates.

Use an atlas to locate the following mountain ranges on the world map.

- | | | |
|-----------------------------------------------|---------------------------------------|------------------------------------------|
| <input type="checkbox"/> Ural Mountains | <input type="checkbox"/> Alps | <input type="checkbox"/> Atlas Mountains |
| <input type="checkbox"/> Rocky Mountains | <input type="checkbox"/> Appalachians | <input type="checkbox"/> Himalayas |
| <input type="checkbox"/> Great Dividing Range | <input type="checkbox"/> Pennines | <input type="checkbox"/> Southern Alps |
| <input type="checkbox"/> Andes | | |



These are the highest mountains from each of the continents and some island nations. Find out what mountain range they belong to, how high they are and locate them on the map above.

CONTINENT	MOUNTAIN	MOUNTAIN RANGE	HEIGHT
■ Africa	<i>Kilimanjaro</i>	_____	_____
■ Antarctica	<i>Vinson Massif</i>	_____	_____
■ Asia	<i>Everest</i>	_____	_____
■ Australia	<i>Kosciusko</i>	_____	_____
■ North America	<i>McKinley</i>	_____	_____
■ South America	<i>Aconcagua</i>	_____	_____
■ Europe	<i>Elbrus</i>	_____	_____
■ New Zealand	<i>Aoraki (Mt Cook)</i>	_____	_____

Volcanic Activity

Volcanoes are classified as active, dormant, intermittent or extinct.

What do YOU think each of the terms mean?

• active _____

• dormant _____

• intermittent _____

• extinct _____

Using some resources from the school library, give a definition of each of the terms.

• active _____

• dormant _____

• intermittent _____

• extinct _____

Make an Erupting Volcano

Equipment

- paper plate
- clay or modelling dough
- toilet roll
- baking soda or bi-carbonate of soda
- vinegar
- red food colouring

Procedure:

1. Build a mound of clay using the paper plate as a base.
2. Leave an opening in the centre of the mound to represent the central vent of the volcano.
3. Insert the toilet roll into the opening.
4. Push into the sides of the mound with a pencil to make openings that represent the side vents of the volcano. Make sure you pierce the toilet roll with the sharp end of the pencil.
5. Fill the tube with baking powder (or bi-carbonate soda).
6. Add some red food colouring to the baking soda.
7. Add vinegar to the baking soda and watch the eruption!